





MICRO-FINANCING

Our Micro financing initiatives support the community and help develop economic stability.

Zuper Shrimp Paste, Chicken Farms. Fish Farms micro-enterprises address several SDG's





LITERACY AND SCHOLARSHIPS

We provide scholarships to high achieving children from low income families and through our Educational Fund, all children receive benefits such as books, stationary, school bags and funding for use in school related activities. Currently we have 2 libraries which provide a learning space and help develop literacy in the community





CLEAN WATER AND GOOD HEALTH

For a community that lives on the banks of the Seruyan River and use it for everything from fishing to drinking to bathing, it was vital to ensure the availability of clean water. By providing water filters to every house and installing 3 large water filtration systems, we help to ensure the health and well-being of our community

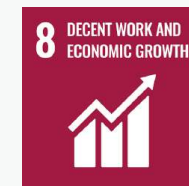




FLOATING CLINIC

The Floating Clinic gives us access to people in the most remote villages, benefiting those with limited resources and mobility. Our Outreach medical services, are particularly beneficial to women, children and the elderly who would otherwise not receive vital medical services.





TREE PLANTING

We've planted over 300,000 trees to date, these trees sequester carbon, keep the air clean and produce fruits for people and animals in our concession. In 2018/19, we also planted 20,000 mangrove trees, creating a vital marine habitat that provides protection to marine life. All saplings are purchased from local suppliers, giving communities added economic stability





SOLAR POWER

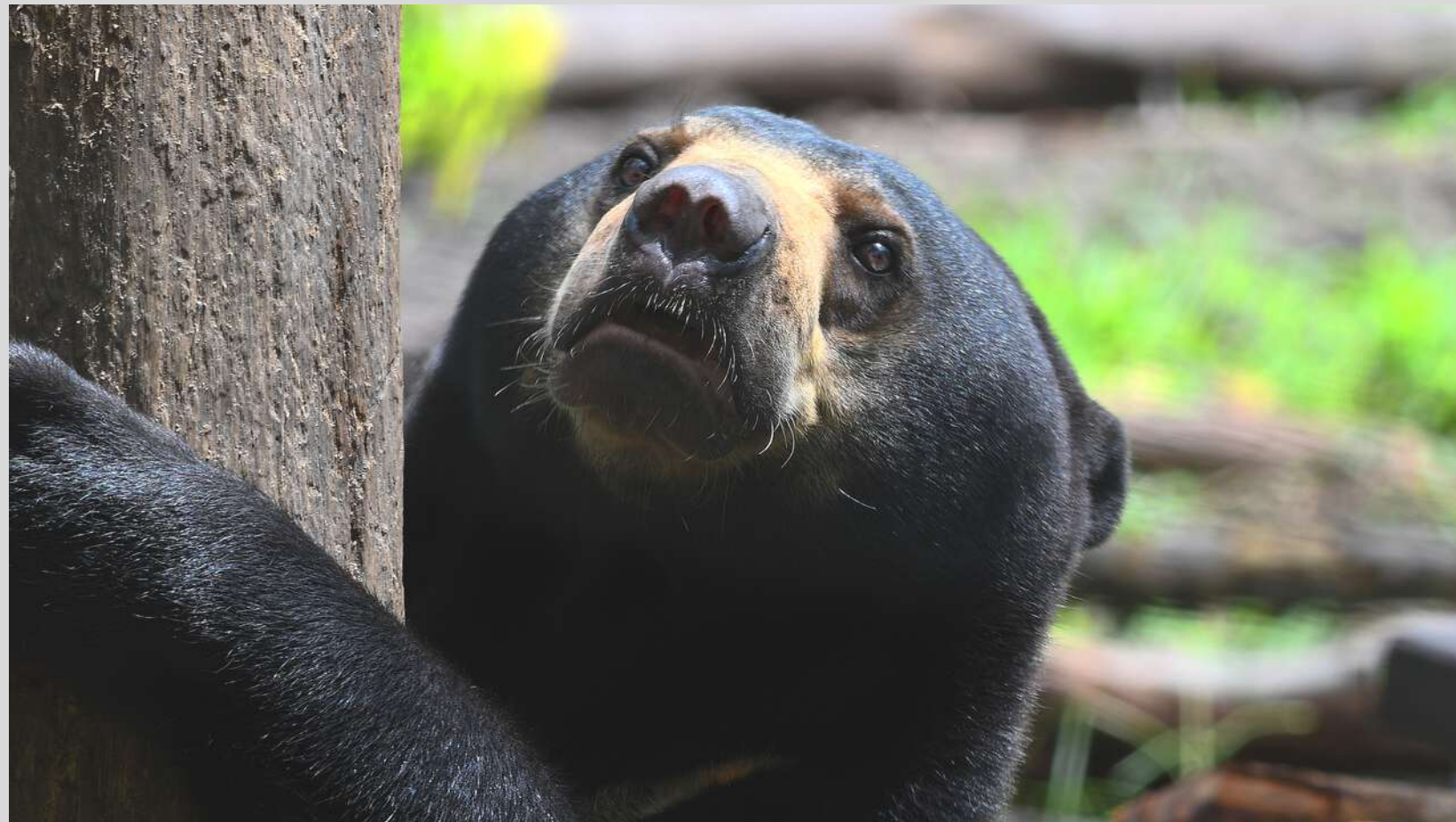
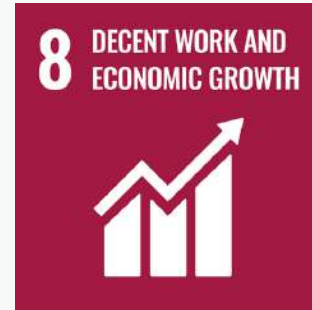
By providing each household with solar lanterns along with larger solar installations, we are improving the quality of life of all community members

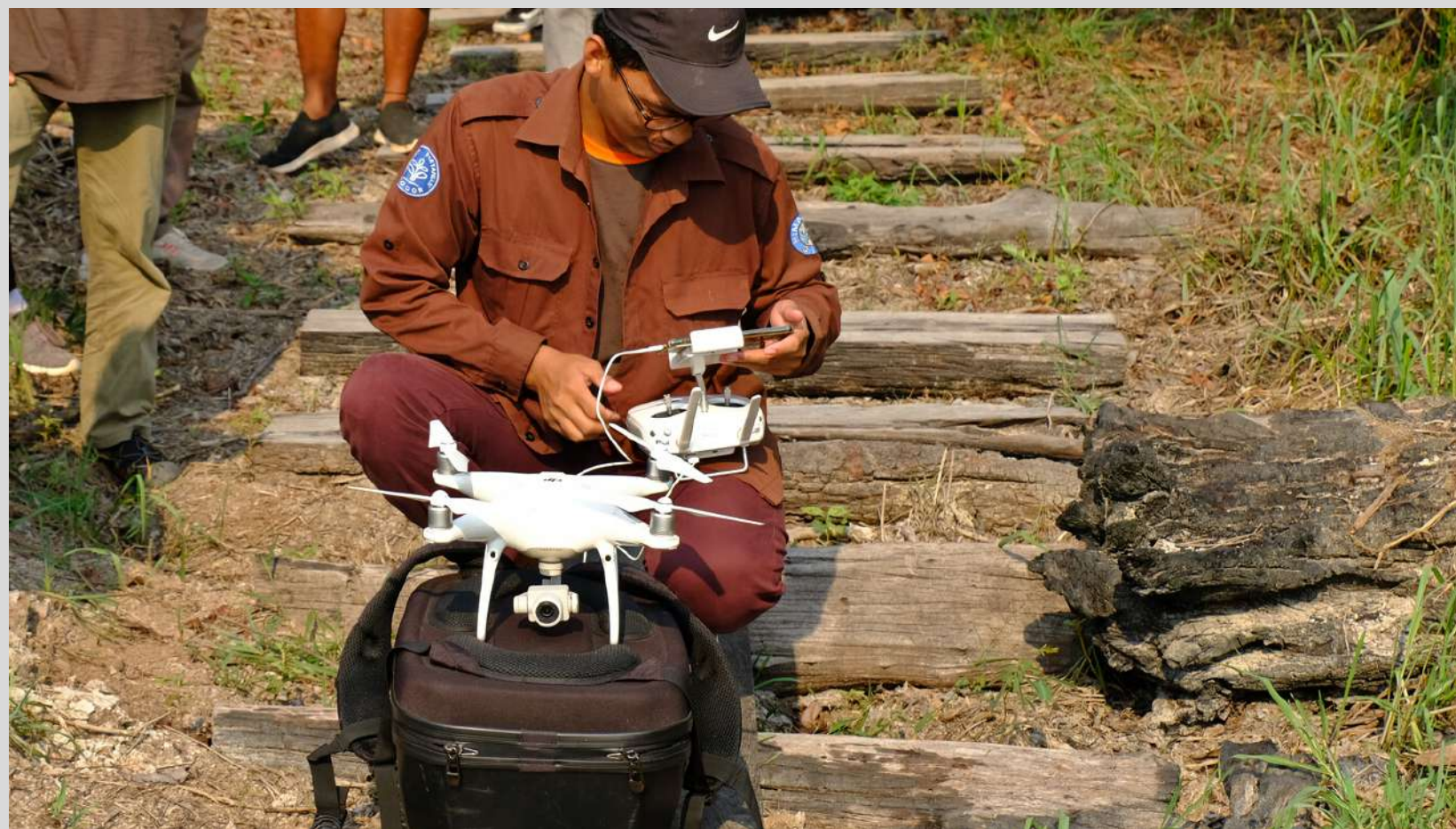




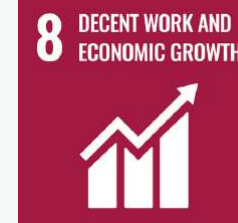
PROTECTING ENDANGERED WILDLIFE

We partner with Orangutan Foundation International (OFI), the government and the community to protect threatened & endangered key species.





DRONES, COMPUTERS, GENERATORS AND CAMERA TRAPS



We provide the tools required to collect data that will help us be more efficient.
We train people to develop skills and abilities and give communities access to technology.





All initiatives at Rimba Raya Biodiversity Reserve are funded by income gained from the sale of carbon credits and are aimed at supporting people's livelihoods and reducing GHG emissions, with the goal being to alleviate poverty. Our micro-enterprises generate income for the community, while we support local business owners by purchasing from them directly. Between direct employment (approx 60 persons/households), sub-contracting and community initiatives, we estimate that we have made a direct impact on every household in terms of delivering supplemental income opportunities.



Micro- enterprises and community initiatives increase the income of all households bordering the concession, giving community members the economic ability to afford food and other basic necessities. In addition, we promote sustainable agricultural practices as a means to improve the livelihoods and capacities of small-scale famers. Micro-financing is provided to start small enterprises that are directly related to food production: Salty Fish, Zuper Fish Paste, Chicken and egg farms, Cows for milk and meat, Rice, Nurseries for tree saplings and vegetables, Community Farms, Pineapple farm, Hydroponics



We are very focused on the health and well-being of community members, initiatives that demonstrate this:

1. Individual Water Filters that provide clean water to every household
2. Water filtration systems that provide villages as a whole, access to clean water - so far by the end of 2019, we installed 3 systems.
3. We have provided individual solar lanterns to every household
4. Larger solar power systems have been installed to improve access to electricity in several villages. We've also started a program to provide a solar system per every two houses. The goal is to have this implemented in each village.
4. We built a floating clinic to provide access to healthcare services in every village particularly those in the most remote regions of the concession.
5. A program has been implemented in which we provide reading glasses to those in need. This has a direct impact on income earned as it affects productivity.



Project proponents have established scholarship funds that pay for books, libraries, certification of teachers, school supplies for students and cash scholarships to pay for secondary education outside the communities. We have also established two libraries that help develop literacy and provide access to learning resources.



Women's groups can be effective structures for community-based forest management which is why we at InfiniteEARTH, thought it prudent to start the women's COOP where women would be empowered to develop initiatives that would be overseen by women while working in partnership with the men in the community. Supporting family planning and women's education will also facilitate taking women out of poverty.

Women led micro- enterprises:

Zuper Shrimp Paste, Chicken and Egg farming, The Salted Fish micro-enterprise, Traditional Handicrafts



Since the inception of Rimba Raya Biodiversity Reserve, we have worked towards providing safe and affordable drinking water to all households bordering our concession. We have supplied 2500 portable water filters (one to every household) and built three water filtration systems that supply whole villages with clean water. Protecting and restoring water-related ecosystems such as the peat forest and the rivers in our concession, is essential if we are to mitigate water scarcity. We continue our efforts in educating the community and encourage water efficiency.



We've invested in clean energy sources in the following ways:

Each Household has been given a small solar system that ensures that they have access to a light source at night., We've supplied larger solar systems to power roads and community areas and in 2019, we installed solar systems to be shared between two houses, covering all houses in two villages bordering the concession with the long term goal of installing this system in every village.



We promote development-oriented policies that support productive activities, decent job creation, entrepreneurship, creativity and innovation, and encourage the formalization and growth of micro-enterprises. Additionally we have introduced technology such as GPS, drones, wildlife camera traps, computers, smart phones and access to the internet, all of which enables employees to perform their jobs safely and effectively. We encourage savings through the garbage bank initiative that pays for garbage collected.

9 INDUSTRY, INNOVATION
AND INFRASTRUCTURE

Having converted aging and degraded infrastructure into libraries, we have improved people's livelihoods by providing social spaces and helping to improve literacy levels. We also make investments in infrastructure that help improve safety such as walkways and gangways. We are upgrading local infrastructure, make investments in clean energy, supply technology that allows for increased and improved communications, while making use of technology to gather data that will help make our initiatives more effective. These benefits are available to all community members, including marginalized groups, who would not have had access otherwise. Micro-financing has provided employment opportunities to small businesses.

10 REDUCED
INEQUALITIES

We empower minority groups by providing financing for micro-enterprises, health services, access to clean water, food, education and technology. The project is providing equal opportunity employment for women and other minority groups. We ensure access to education to children around our concession and provide training opportunities to employees, teaching them to use technology and have access to information. We also provide access to clean water by giving each household water filters and each village Water Purifying Systems that benefit the villages as a whole. Field staff are able to advance and develop skills by receiving all necessary training and capacity building. All households have access to electrification from solar lanterns and larger solar power installments.

11 SUSTAINABLE CITIES
AND COMMUNITIES

While there are no large cities within the project area or surrounding region, we continue to provide all opportunities that would be accessible to them in a city. The project provides opportunities to all people, while encouraging and educating them on the impacts of climate change and our role in that by ensuring the existence of buffer zones, promoting forest protection and sustainable harvesting of natural resources as well as provide economic opportunities that strengthens communities and ensures safety and access to food and shelter. With our floating clinic, we assist and educate people about family planning as per government guidelines so as to limit population growth, thus ensuring that children have greater access to food, nurturing and education. We facilitate mapping of the concession and surrounding areas so that the community members are aware of the land status, utilization possibilities and improve production.

12 RESPONSIBLE
CONSUMPTION
AND PRODUCTION

The development and implementation of a land-use policy that organizes and optimizes the use of land and forest resources to encourage sustainable management and efficient use of natural resources. We educate community members about the reduced availability of fish, a dietary staple and train people in the field of sustainable fishing practices and production. The community is educated about best practices for water consumption and productive husbandry.



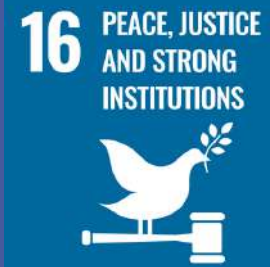
We work at improving education, building awareness on human and institutional capacity on climate change mitigation, adaptation, impact reduction and early warning. Our carbon accounting area is approximately 47,000 ha. As a means to introduce our project to interested parties we have attended several seminars worldwide. Additionally, we have done some Podcasts, interviews and presentations at companies, schools and investors in Asia, Europe and the USA.. The entire project area was prevented from being converted to an oil palm plantation . Community fire brigades have been trained to prevent and suppress fires during the dry season (often referred to as the burning season when oil palm plantations set fires to the whole of Borneo) and we have conducted community awareness campaigns about "accidental fires" (from camp fires and cigarettes) as well as intention fires set by community members for small-scale agriculture. Significant investment in fire prevention and suppression has been made, specifically involving communities directly in the educational, training and preparation process . Mangrove Tree Planting- we've planted over 30,000 mangroves which help sequester even more carbon which would otherwise be in our atmosphere and which provide vital habitat for juvenile marine species. Mangroves also protect inland forests and soils from being eroded. This compound services component of mangroves makes them one of the most important ecosystems on the planet. We have also planted over 300,000 trees since the inception of the project, providing vital habitat and food sources to several endangered species, such as the Bornean orangutan, sun-bears, clouded leopards and several bird species.



A sustainable fishery has been established in conjunction with World Education. Buffer zones have been created, which reduce the amount of peat drainage into the Seruyan River. Sustainable fishing practices are encouraged, and fishing with the use of poison and explosives isn't allowed. We've initiated several 'clean-up' programs-helping to keep the Seruyan River, village docks and the villages clean and limiting the garbage that may have ended up in the ocean. Mangrove replanting in the coastal area helps sequester even more carbon which would otherwise be in our atmosphere. It provides a vital habitat for juvenile marine species while it protects inland forests and soils from being eroded.



We generate carbon credits from approximately 47,000 ha. of peat forest. In doing so, we are ensuring the continued protection of vital habitat that is required for the survival of several endangered animal and plant species. We are committed to the restoration of the area through our reforestation and afforestation initiatives. Wildlife protection is a main priority. The Rimba Raya Biodiversity Reserve is host to over 120 threatened and endangered species. Through our connection to and work with Orangutan Foundation International (OFI), Rimba Raya is helping shape the national wildlife protection plan. Rimba Raya is proactively engaged in the conservation of endangered orangutans and has built permanently staffed release stations, which have facilitated the efficient running of these release sites. We make use of camera traps to collect data of flora and fauna to help ensure effective methods are employed to protect our area.



The project has supported the formation of stronger institutions through the creation of working groups that are inclusive of women and indigenous groups. These working groups have been created in conjunction with project partners; World Education and Orangutan Foundation International (OFI), ensuring these decentralized groups have sufficient institutional support. Additionally, we are working towards improved, productive and durable ties with government entities both at a local and national level.



We promote multi-stakeholder partnerships, working closely with NGO's, organisations, and government to achieve our goals. We have a conservation partnership with Orangutan Foundation International (OFI) and working agreements with local stakeholders and government entities. We also cultivate strong partnerships with community members, involving them in the process of all initiatives because it's their vested involvement that ensure sustainability of initiatives and protection policies.



Limba Raya
BIODIVERSITY RESERVE
An InfiniteEARTH™ Project





InfiniteEARTH™
Beyond Carbon. Beyond Sustainability.



**SUSTAINABLE
DEVELOPMENT**

GOALS

www.infinite-earth.com
info@infinite-earth.com